

Spring Creek Farms

A to Z, LLC

640 Total Acres

Section 14 T36N R31W, Todd County South Dakota

Of which

- 520+/- acres are Irrigated Acres and the balance is native meadow and pasture.
- Certified Organic
- Equipment: 3 Valley Pivots, new in 2005
1 Zimmatic
Electric Pumps
- 4 Irrigation Wells, excellent water.
- Possession is negotiable preferably a fall closing on or before Dec. 1, 2010. Crop will be retained by Sellers.
- All 2010 and Previous years taxes will be paid by sellers.

Listing Price: \$ 1,536,000.

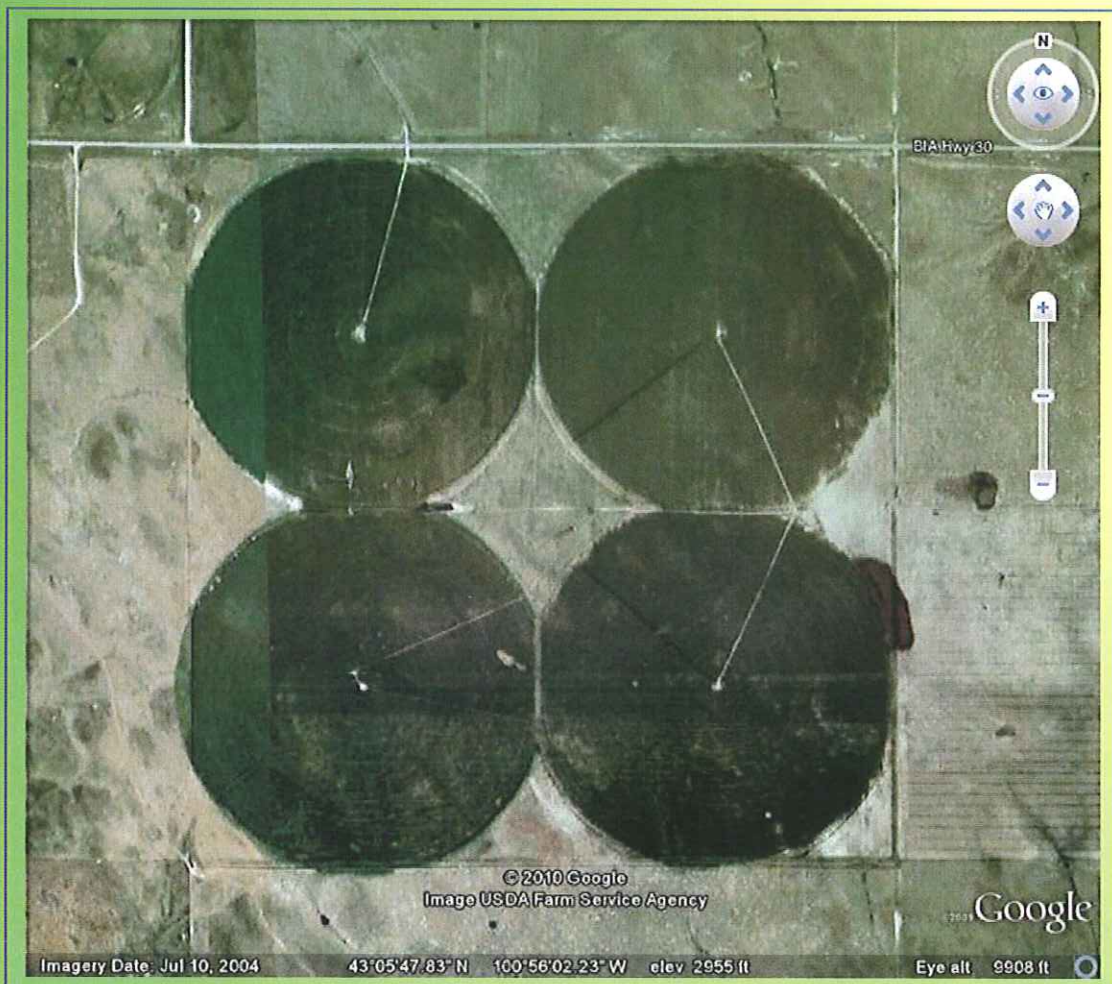
Offered Exclusively By:

Weber and Company Real Estate
906 W. Hwy. 20 ~ Valentine, NE
402-376-1216

Rick Weber, Broker ~ 402-389-1406

www.weberco.biz

weberco@shwisp.com



Well Location

Well 1: 1300 ft. E., 1350 ft. S of NW Corner

Well 2: 1150 ft E., 2350 ft. S of NW Corner

Well 3: 1350 ft. E., 1250 ft. N. of SW Corner

Well 4: 2630 ft E., 1650 ft. S of NW Corner

Section 14 T36N R31W

Four Pivots:

Zimatic, 10 Towers, 1312 ft. long 700 – 800 GPM

Zimatic, 10 Towers, 1312 ft. long 800 GPM

Electrogator, 10 Towers, 1300 ft. long 700-750 GPM

Zimatic, 10 Towers, 1312 ft. long 700 – 800 GPM

2010 Soybean Crop